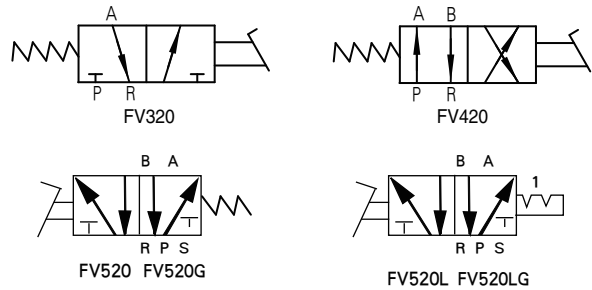


FV 系列手动/脚踏阀 Series Manual / Foot Valve

FV 系列脚踏阀 Series Foot Valve



图形符号 symbols



产品特点 Features

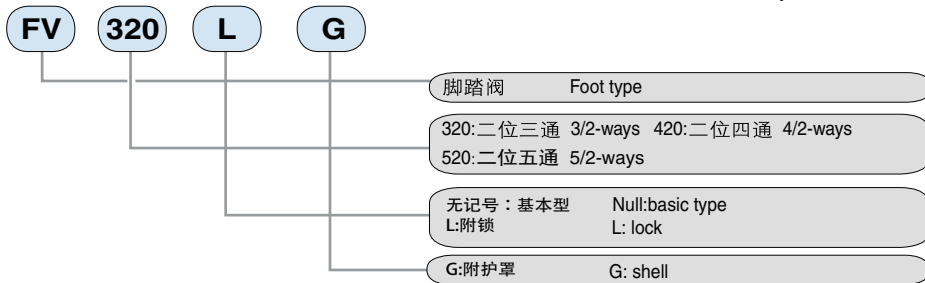
结构紧凑，外表美观，互换性强，性能稳定、可靠。可应用于有防爆要求的场合。

二位三通的可R、P口可互换，使常闭转化为常开。

Compact structure, beautiful appearance, strong compatibility, stable and reliable performance. Can be used in occasions with explosion-proof requirements.

3/2 ways R, P mouth and interchangeable, normally closed into the open.

型号注释 Order Code



技术参数 Specification

订购码 Order Code	FV320	FV420	FV520	FV520L	FV520G	FV520LG
结构类型 type	二位三通 3/2-way	二位四通4/2-way	二位五通5/2-way	二位五通5/2-way	二位五通5/2-way	二位五通5/2-way
接管口径 threads	G1/4					
公称通径 Dia(mm)	8					
工作介质 Working medium	压缩空气 Compressed air					
工作压力范围 Working pressure range(MPa)	0.05~0.8					
介质温度[°C] Medium temperature	-5~60					
环境温度[°C] Ambient temperature	-5~60					
耐久性(万次) Life time (10K times)	≥ 200					
动作方式 Action type	直动式 Direct					
润滑 Lubrication	无油oil free					