

KA 系列单向阀

Series one way Valves

KA 系列单向阀

Series one way valves



图形符号 symbols

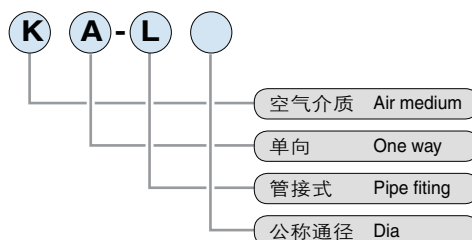


产品特点 Features

KA-L系列为单方向型控制元件，空气只能从P→A正向流动，反向截止，使回路中空气不能回。

KA-L series are one way type controlling element, i.e air flows from P to A only, the reverse flow is shut off, making it impossible for air to flow back.

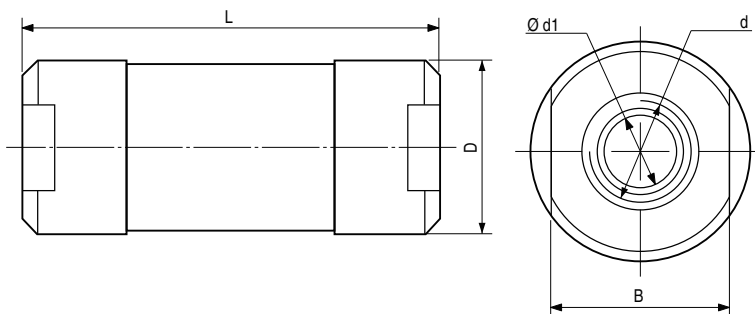
型号注释 Order Code



技术参数 Specification

工作介质 medium	经过滤的压缩空气 compressed air after filter
工作压力 Working pressure(MPa)	0.05-0.8
开启压力 Start pressure(MPa)	0.05
工作温度 Working temperature (°C)	-5-50

外形尺寸 Outlook & Dimension



型号 model	d	d1(Ø)	D(Ø)	L	B
KA-L6	G1/8	M10 × 1	13	64	24
KA-L8	G1/4	M12 × 1.25	16	64	24
KA-L10	G3/8	M16 × 1.5	20	86	36
KA-L15	G1/2	M20 × 1.5	24	86	36
KA-L20	G3/4	M27 × 2	32	112	46
KA-L25	G1	M33 × 2	40	112	46
KA-L32	G1¼	M42 × 2	48	161	75
KA-L40	G1½	M48 × 2	54	161	75
KA-L50	G2	M60 × 2	70	195	90